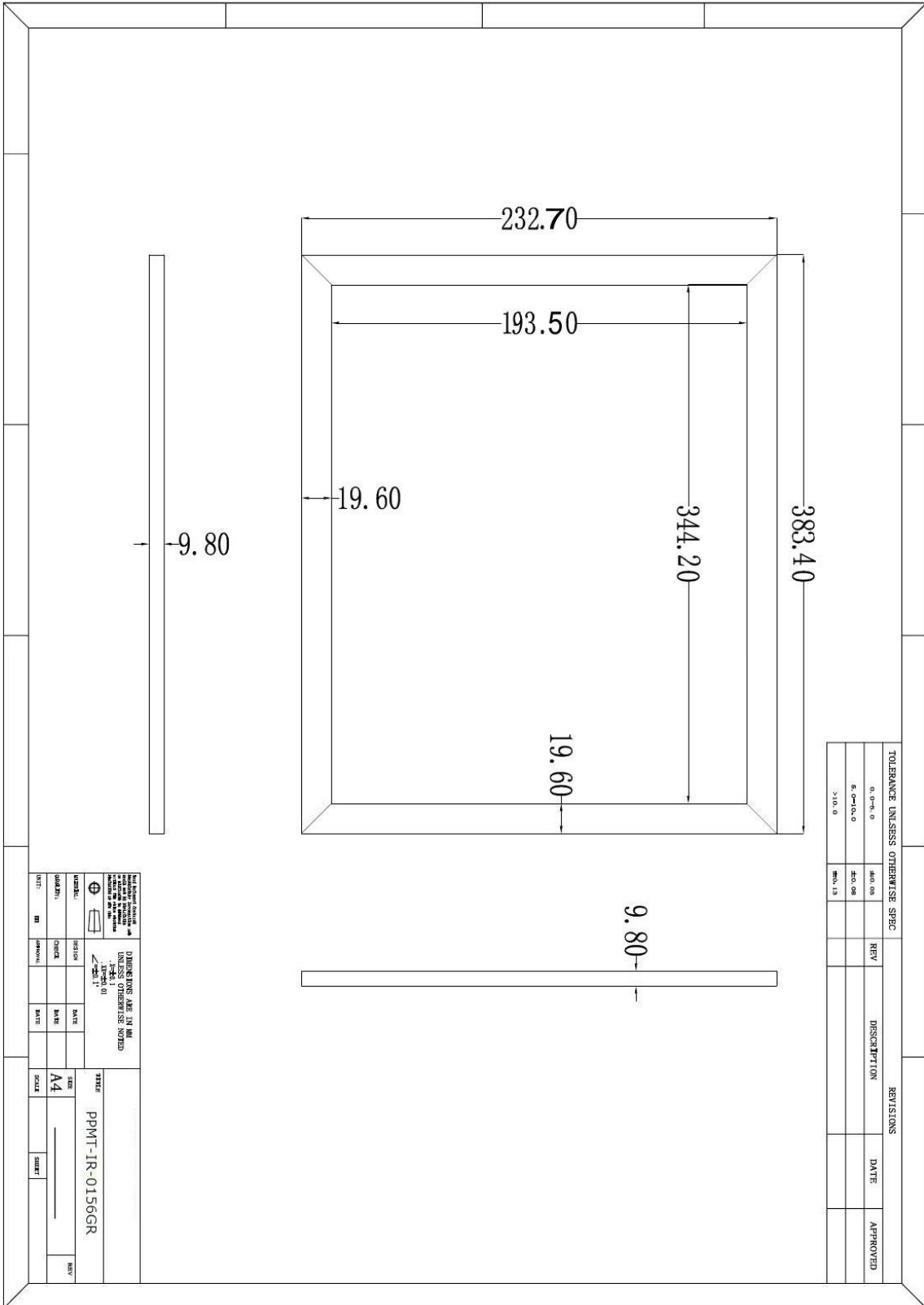


PPMT-IR-0156GR

Specs for 15.6inch IR touch screen

Physical characteristic	Standard color	Black frame
	Material	tempered glass
	Transparency	≥92%
	USB connector cable	1500mm
	Minimum touch object	≥5mm
	Input method	Finger, gloved hand, or opaque object
	Resolution	4096x4096
Electrical characteristic	Scan frequency	60Hz
	Interface type	USB2.0 or RS232
	Output format	Coordinate output
	Response time	< 15ms
	Touch accuracy	2mm
	Working voltage	DC +5V+/-5%
	Power supply	USB
	Operation current	< 180mA
Environmental suitability	Working temperature	-20℃~65℃
	Storage temperature	-40℃~85℃
	Working humidity	0~85% RH, non-condensing
	Storage humidity	0~95% RH, non-condensing
	Light immunity	Anti-glare
Reliability	Touch times	unlimited
	Flammability	UL94V-0
	Certification	CE,FCC,ROHS
Software characteristic	Windows 10/11/Linux	

Drawing (unit: mm)



TOLERANCE UNLESS OTHERWISE SPEC		REVISIONS		
REV	DATE	DESCRIPTION	DATE	APPROVED
0.0-0.3	0			
0.3-1.0	0			
1.0-3.0	0			

All dimensions are in millimeters unless otherwise noted. DIMENSIONS ARE IN MILLIMETERS UNLESS OTHERWISE NOTED		TITLE PPMT-IR-0156GR	
DRAWN: [] CHECKED: [] APPROVED: []	DATE: [] DATE: [] DATE: []	SIZE A4	SHEET []